

Multiple Deployments

- On-Premises VM
- Cambium Cloud (Q4/17)

Flexible Monitoring

- Hierarchical Dashboards
- Statistics and Trending
- Alarm History

Product Integration

- ePMP, PMP, cnReach
- cnPilot Home/Enterprise

Tower-to-Edge Display

- Hierarchical Tree
- Parent/Children Health
- Multiple Radio View

Data and Reporting

- CSV Reports
- RESTful API
- Table Export in PDF

Easy Onboarding

- Zero Touch Support
- SSL Communication
- Firewall Friendly

Application Integration

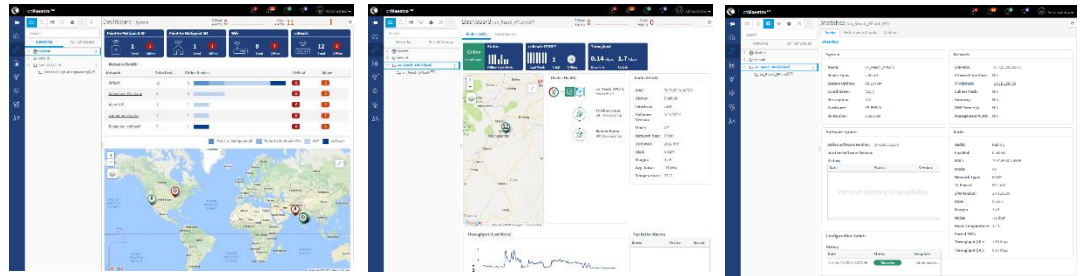
- Monitoring RESTful API
- WebHooks API (roadmap)

Provisioning

- Device Configuration
- Software Update
- Bulk Distribution

Product Overview

cnMaestro for cnReach integrates IIoT device administration into Cambium's next-generation Network Manager and Wi-Fi Controller. It provides end-to-end wireless lifecycle management and supports tight integration with other Cambium products, including ePMP, PMP, and cnPilot. cnMaestro greatly simplifies the administration of all Cambium infrastructure and IIoT devices.



Product Details

Deployment

- Cloud-Hosted Web Portal
- Customer-Hosted VMware OVA
- Browser-Based Web UI

Visualization

- Full Visibility Across Network
- Supports ePMP™, cnPilot™, PMP, cnReach™
- Multiple Product Views
 - Access and Backhaul View
 - Wireless LAN View
 - IIoT View (for cnReach)
- Hierarchical Device Tree
- Google Maps Integration
- Device Aggregations
 - Network, Tower, Site, AP Group

Monitoring

- Inventory Table
- Dedicated Device Dashboards
- Maps and Map Modes
- Statistics and Trending

Data and Reporting

- Statistics Reports Exported in CSV
- RESTful Monitoring API
- Export Tables in CSV or PDF
- Graphical Reports (roadmap)
- Email Alarms (roadmap)
- WebHooks API (roadmap)

Administration

- Multiple Administrators (up to 10)
- Role-Based Access
- Administrator Session Visibility

Onboarding and Provisioning

- Zero-Touch Onboarding
- Template Configuration
- Software Distribution
- Software Update

Troubleshooting and Forensics

- Tower-to-Edge View
- Stateful Alarms, Events
- Alarm History

Security

- Communication over SSL
- No Inbound Internet Access
- Placed Outside of Traffic Path
- Firewall and NAT Friendly